



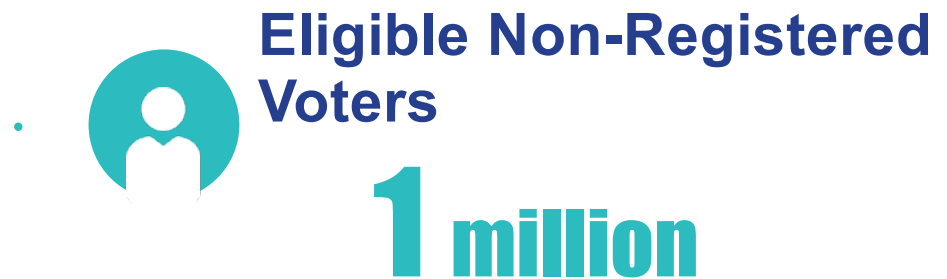
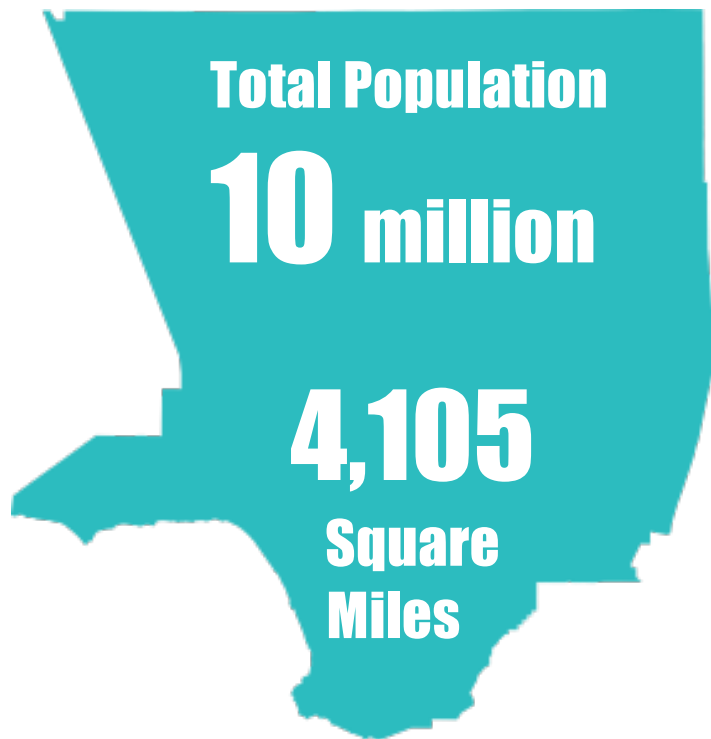
# Voting Solutions for All People

Los Angeles County

[LAVote.net](http://LAVote.net)

# Demographics at a Glance

---



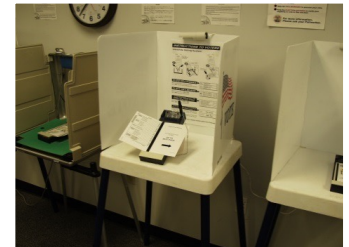
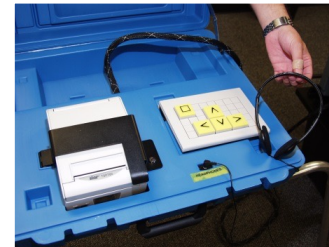
# Project Background

## Need to Replace Existing System

- InkaVote Plus extended past its lifespan
- Antiquated technology
- Lacks flexibility and adaptability

## Limited Market

- County is the largest and most complex election jurisdiction
- Unstable regulatory environment



# New Voter Experience

The **vision** for the new voting experience includes:



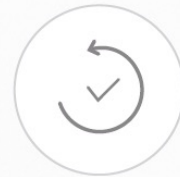
**Modern Tally System**



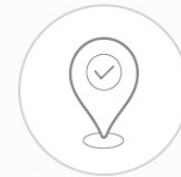
**Interactive Sample Ballot**



**Ballot Marking Device**



**Early Voting**



**Vote Centers**



**Electronic Pollbooks**



**New Vote by Mail Experience**



# Voting Period and Vote Centers

---



## Extended Voting Period

- Pre-VSAP, in-person voting only take place on Election Day
- In-person voting is now available up to 10 days before and on Election Day



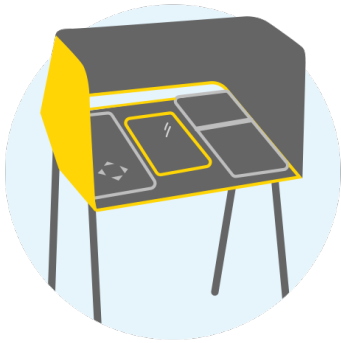
## Vote Centers

- Pre-VSAP, voters were limited to a single polling place
- Voters now have the choice to visit any Vote Center in the LA County



# Ballot Marking Device and Tally

---



## Ballot Marking Device

- Provides voters the benefits of technology for an easy and accessible voting experience in up to 13 languages
- Device is not connected to any network or internet
- Voters are casting their official votes on a physical paper ballot to ensure security and integrity



## Tally System

- Introduces the use of image processing technology for an open and transparent counting process
- The improved system will capture and store ballot images, tally both ballot types and ensure accurate reporting of results



# New Enhancements

---



## Interactive Sample Ballot

- Optional and convenient tool to speed up the voting experience
- A voter views and marks their Sample Ballot on their personal device
- Once selections are made and verified a private QR code generated
- This QR Code (Poll Pass) will transfer the selections onto a paper ballot at the Vote Center



## Electronic Pollbooks

- Live access to the voter registration database in LA County
- Allows voters to visit any Vote Center in LA County
- Provides for same-day registration for non-registered voters



# Tally System

---



The new tally system introduces the use of image processing technology for an open and transparent counting process.

The improved system will capture and store ballot images, tally both ballot types and ensure accurate reporting of results.





# Project Resources

---

- VSAP Final Report
  - Link: [https://lavote.net/docs/rrcc/media/VSAP-Report\\_FINAL.pdf](https://lavote.net/docs/rrcc/media/VSAP-Report_FINAL.pdf)
- VSAP Project Website
  - Link: <https://vsap.lavote.net/>

