

# Out In The Open: How the JPL Library is Leading Open Science

SCALE 20X  
March 12, 2023

Caroline Coward, Library Group Supervisor  
Enterprise & Information Systems Engineering Section

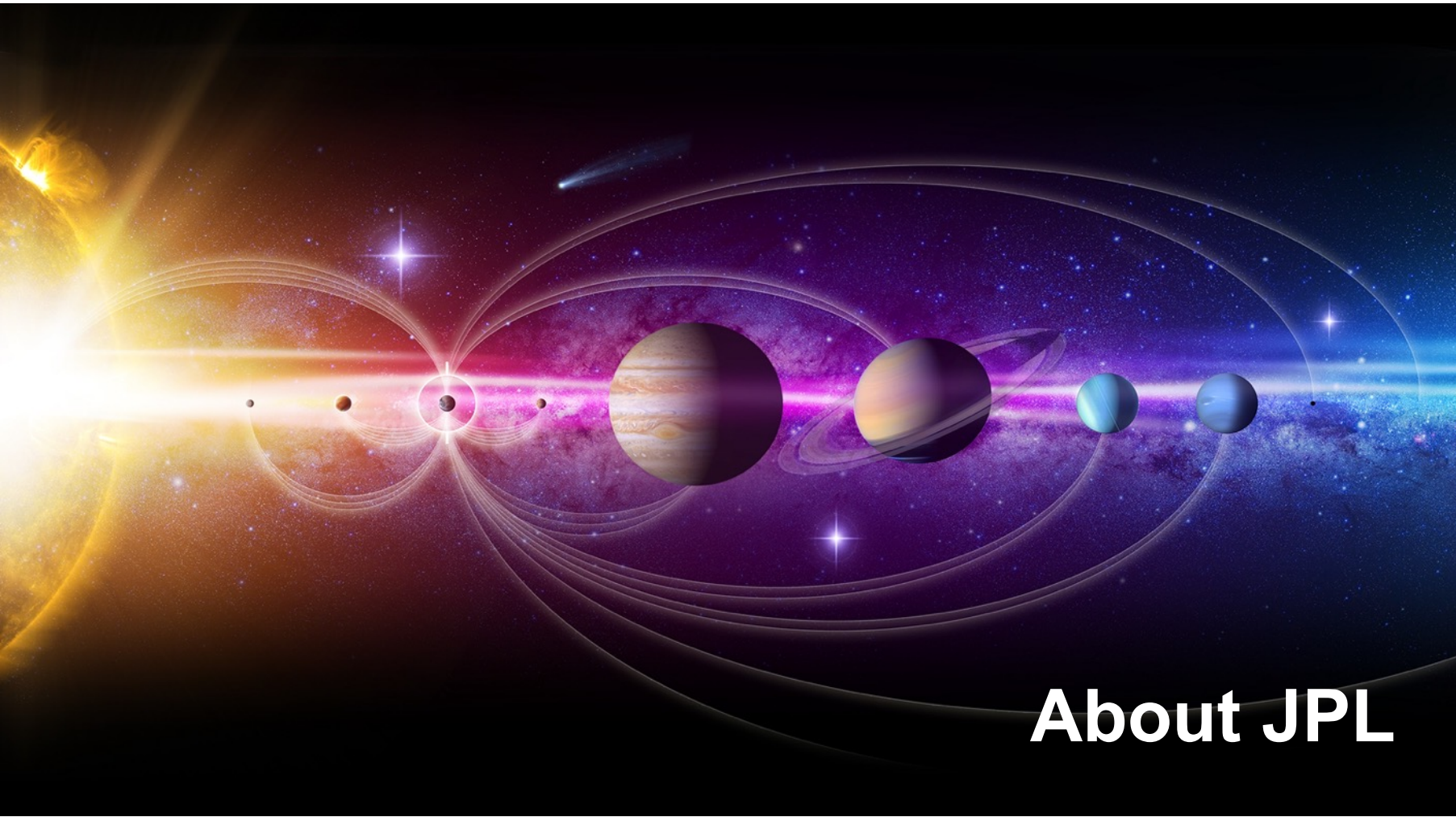
©2022. California Institute of Technology. U.S. Government sponsorship acknowledged. CL#22-6499  
All images used by permission of the copyright holder.  
Reference herein to any specific commercial product, process, or service by trade name, trademark,  
manufacturer, or otherwise, does not constitute or imply its endorsement by the United States Government or the  
Jet Propulsion Laboratory, California Institute of Technology.



**Jet Propulsion Laboratory**  
California Institute of Technology

## **In Brief...**

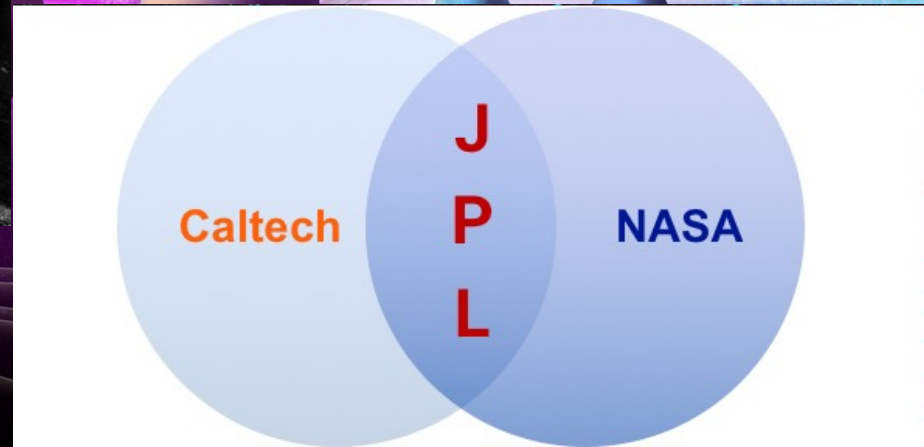
- ✓ **Why Open Science?**
- ✓ **Open and FAIR initiatives**
- ✓ **Data science activities and partnerships**
- ✓ **Open Access**
- ✓ **Knowledge Office/Office Of the Chief Engineer partnership**
- ✓ **Data Citation Community of Practice**
- ✓ **NASA's Ethical AI initiative**
- ✓ **Open Science session at the American Geophysical Union 2021 Fall Meeting**



# About JPL



- Founded in 1936
- Army years 1943-1957
- NASA 1958-present



NASA's Only FFRDC

# By Way Of Introduction...

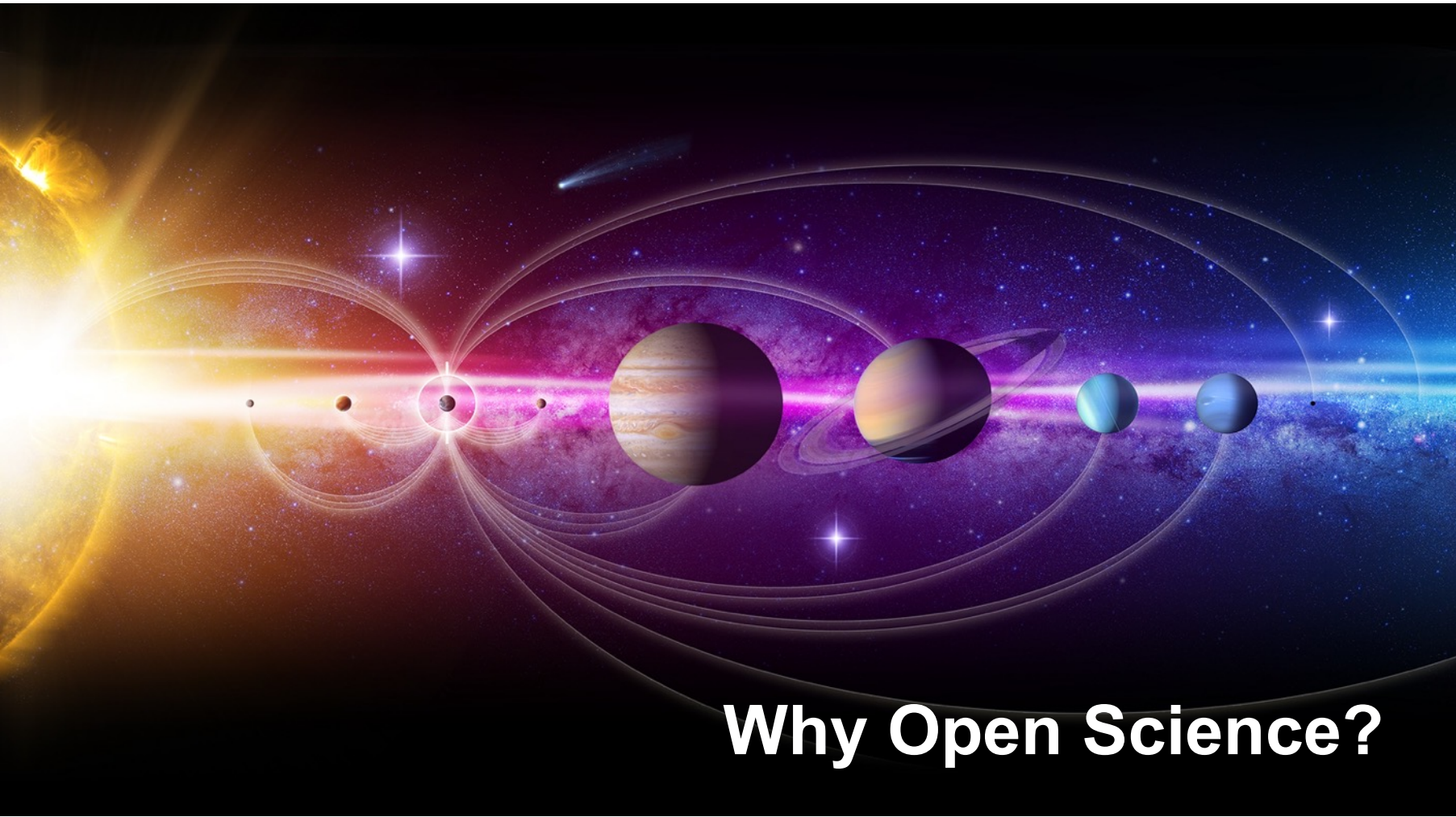
- MLIS SJSU 1997
- Bachelor of Music – cello performance
- Over 30 years working in all types of libraries –
  - USC
  - PCC
  - 20<sup>th</sup> Century Fox Studios
  - Sierra Madre PL
  - CSU Dominguez Hills
- Earned tenure as university faculty
- Information Literacy Coordinator in higher ed for 15yrs
- Jet Propulsion Laboratory since 2017



Image: Jeff Broude, 2004



Image: Jeff Broude, 2009



# Why Open Science?

# Why Open Science?

*"Open science is an essential part of the Biden-Harris administration's broader commitment to **providing public access** to the nation's taxpayer-supported research and innovation enterprise."*

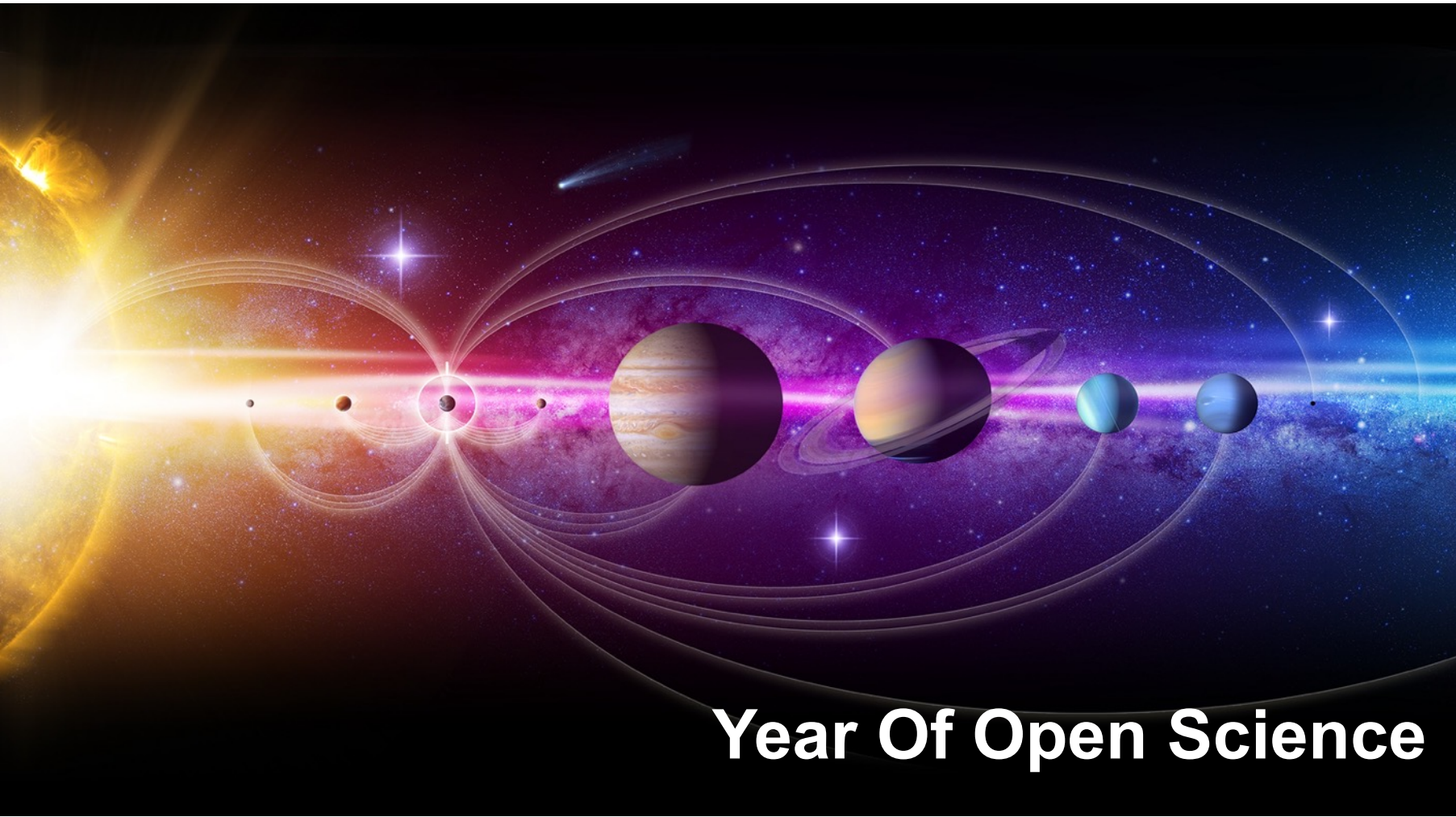
## SMD Open-Source Science Initiative

- *Transparent, Accessible, Inclusive, Reproducible*
- *"Open-source science requires a **culture shift** to a more inclusive, transparent, and collaborative scientific process, which will increase the **pace and quality** of scientific progress."*

TOPS – Transform To Open Science community building effort

## American Geophysical Union (AGU) statement

- *"Scientists, Policy Makers, and Supporting Institutions Should Guard and Promote **Unfettered Communication** of Scientific Data, Debates, and Findings as a Component of Scientific Expression."*



# Year Of Open Science



# 2023 is the Year Of Open Science...

- [Open science announcements across federal agencies](#)
- [Why NASA and federal agencies are declaring this the Year of Open Science](#)
- [Year Of Open Science across federal agencies](#)
- [NASA TOPS Guide to the Year Of Open Science](#)
- [SPD-41](#) and [SPD-41a](#)



# Open and FAIR Initiatives

# Open and FAIR...

Open Access

Open Data - placement, publishing, partnerships

Open Code

Open Tools - GitHub, Jupyter Notebooks, Overleaf

FAIR (Findable/Accessible/Interoperable/Reusable) data

- Search curation
- Data governance standards
- Semantic tools – taxonomy, ontology, knowledge graph



# Data Science Activities and Partnerships

# Data science activities and partnerships

Ontology Working Group/Semantic Tech COP

Data governance partnerships

DOI minting

Data placement

Data Management Plan standards and template

Taxonomy initiatives

    Taxonomy librarian position

JPL Open Repository design (JOR)



# JPL Open Repository

# JPL Open Repository

<https://dataverse.jpl.nasa.gov>

FAIR environment and foundation

Open source

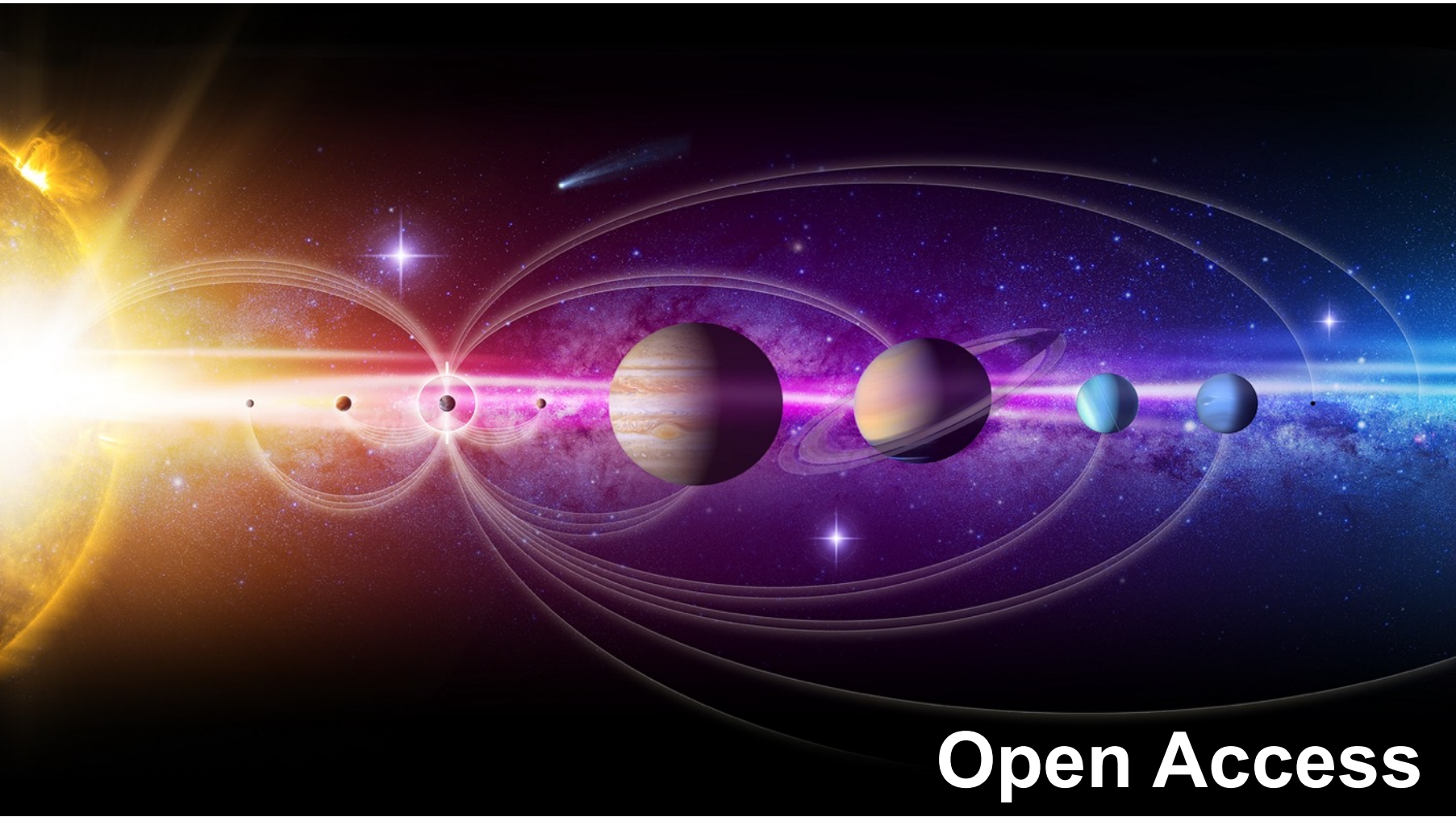
Open science through internal and external sharing of knowledge

- JPL authored publications
- documents
- data
- software.

Need for repository for  
Interdisciplinary/multidisciplinary data  
for publication

JOR features:

- Data storage
- Early internal access to embargoed journal articles
- Bundling of publications, code and data to enable interoperability and reproducibility
- Auto abstract
- Auto issuance of DOI
- Capturing and stewarding data assets across all JPL domains
- Semantic search capabilities



Open Access



# Open Access

Explainer presentations to authors and stakeholders

Transformational agreements

Joint subscription contracts with Caltech

Research Access team (partnership with Document Review group)

Open Access Week annual event with Caltech Library



# Knowledge Management Partnership

# Partnering with our Knowledge Office - Comparison of Priorities

## Library

...informs the work of **knowledge workers** by curating resources and building research connections vital to mission success.

### *Provides...*

- **Research** and enabling technologies
- **Access** to trusted external information
- **Project-specific collections** of science, technology, and engineering resources
- **Advocacy** for access to information, data discoverability and interchange, and intranet curation
- **Expertise**, leadership, and assistance on IM
- **Outreach and training** that builds information literacy
- **Physical space** for learning and information exchange
- **Cooperative relationships** with other libraries, etc.

## Knowledge Office

...builds and leverages **organizational knowledge** to derive value.  
*“To make the most of what JPL knows.”*

### *Charged to...*

- **Connect** people, processes, and technologies
- Identify, create, capture, share, & preserve key knowledge to **leverage** across JPL and NASA
- Drive learning **culture** – understanding of and commitment to KM principles, best practices, and value
- Deliver KM **strategic** plan
- Identify, design, and deploy KM **best practices**
- Measure **progress and impact** of KM programs
- **Coordinate with NASA-wide** KM initiatives.



# Data Citation Community Of Practice

# Data Citation COP

Created January 2021 [after AGU FM 2020 \(virtual\) various chat threads.](#)

[Zenodo page with COP presentations and slides](#)

[Slides from PSIDA 2021 \(virtual\)](#) – scroll to slide #7

[Intro and report from PSIDA 2021](#)



## The Data Citation Community Of Practice: An Introduction and Report

5th Planetary Data Workshop and Planetary Science Informatics and Data Analytics (PSIDA) Meeting  
Tuesday, June 29, 2021

Caroline Coward  
NASA Jet Propulsion Library

Deb Agarwal  
Lawrence Berkeley Laboratory

Kyle Copas  
Global Biodiversity Information Facility

© 2021 California Institute of Technology. Government sponsorship acknowledged.  
All images used by permission of the copyright holder.  
CI #21-2714



**Jet Propulsion Laboratory**  
California Institute of Technology



# Responsible & Ethical AI

# Responsible AI, Ethical AI

## Ethical AI

- [Technical Memorandum – Framework for the Ethical Use of AI](#)
- [NASA SMD Ethical AI initiative](#)
- [44<sup>th</sup> COSPAR Scientific Assembly \(2022\) presentation abstract](#)

[NASA Office Of The Chief Scientist Responsible AI Plan](#)

[AGU/NASA Ethical AI policy development](#)



## NASA's Emerging Approach to AI Ethics

Show affiliations

Coward, Caroline ; Mclarney, Edward ; Gawdiak, Yuri

NASA/TM-20210012886



**NASA Framework for the Ethical Use of  
Artificial Intelligence (AI)**



# NASA Planetary Data Ecosystem Review Board



# NASA Planetary Data Ecosystem Review Board

Apr 23, 2021

## Planetary Data Ecosystem Independent Review Board Delivers Final Report to NASA



**Editor's note:** This feature was updated on Aug. 10, 2022 to include an additional link to the [PDS IRB final report and briefing](#).

NASA's Planetary Data Ecosystem (PDE) Independent Review Board (IRB) delivered its [final report and briefing](#) to NASA on April 20, after examining information collected about planetary data.

NASA's Planetary Data Ecosystem (PDE) Independent Review Board (IRB) delivered its final report and briefing to NASA on April 20, after examining information collected about planetary data. The IRB provided prioritized actionable recommendations for the agency's Planetary Science Division's (PSD) long-term planning and support of the Planetary Data Ecosystem (PDE).

[PDE Final Report](#)

[2021 PSIDA \(virtual\) paper](#)



# Open Science Session – AGU FM2021

# Open Science at AGU Fall Meeting 2021

## Yes, We're Open! The Benefits of FAIR Data and Open Science

<https://agu.confex.com/agu/fm21/meetingapp.cgi/Session/123042>

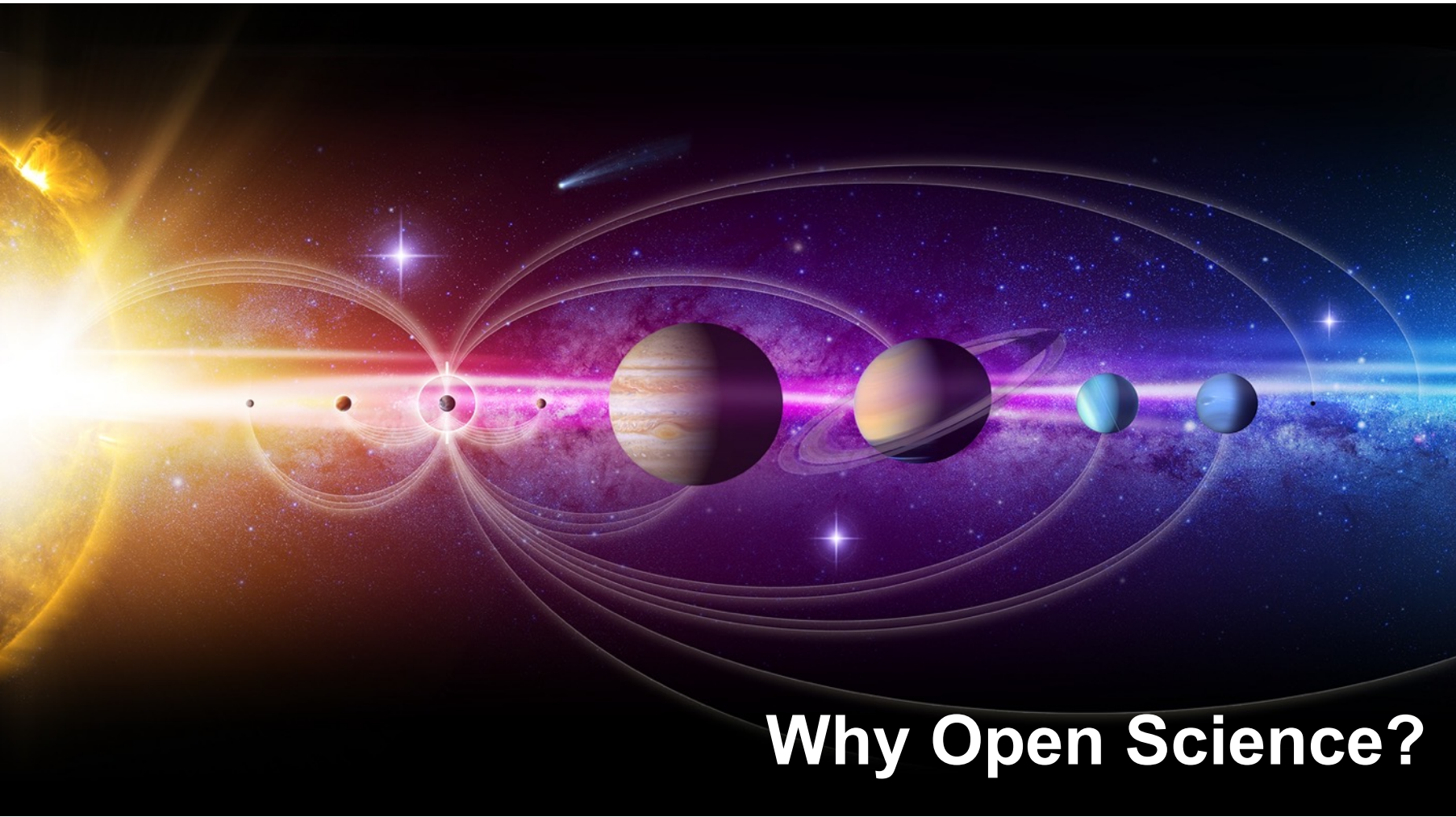
### Open Science

- History of Open Science at NASA (keynote - J. Green/NASA)
- NASA's Open Source Science Ecosystem
- Open Science and AI
- Four Diamond OA publishers: [Volcanica](#), [Seismica](#), [GEUS Bulletin](#), [Tektonika](#)

### FAIR Data

- FAIR data and scholarly communication (keynote – T. Carpenter/NISO)
- New tools and tech
- FAIR practices and the Planetary Data System
- FAIR research facilities in Europe

### DEIA in Open Science



# Why Open Science?

# Why Open Science?

## Expanding our scope

- Information science
- Data science
- Computer science
- Knowledge management

## Broadening our reach

- Influencing JPL and NASA policy
- Breaking down silos
- NASA, FFRDCs, non-library professional societies (AGU, COSPAR, IAF, et al.)

## Raising our profile

- 21<sup>st</sup> century library
- Breaking down barriers
- Serving users more effectively

# Please keep in touch...

---

[caroline.m.coward@jpl.nasa.gov](mailto:caroline.m.coward@jpl.nasa.gov)



<https://www.linkedin.com/in/caroline-coward-nasa-jpl/>



**Jet Propulsion Laboratory**  
California Institute of Technology

---

[jpl.nasa.gov](https://jpl.nasa.gov)